



Norwood Road, Herne Hill, SE24

£510,000

2 bedroom flat - conversion for sale

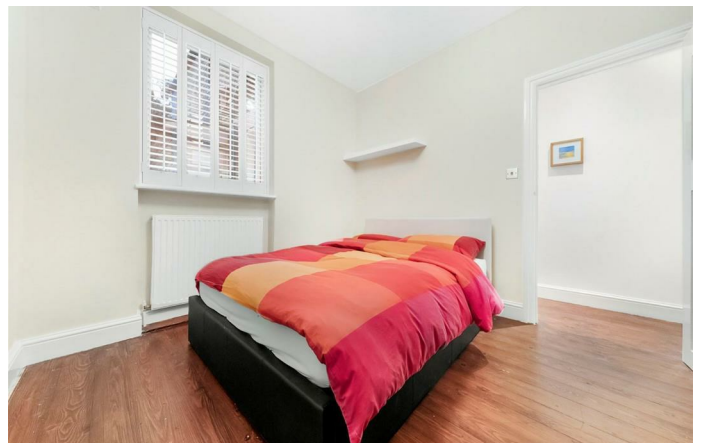
Property Details

A wonderfully bright and well-proportioned two double bedroom flat, securely nestled on the ground floor of a Victorian terraced property offering a quiet and quaint feel. The flat benefits from excellent dimensions – the entire square footage is usable living space, as opposed to being distributed within internal hallways. The bright open-plan reception room is packed full of character with ample room to relax, dine and entertain: this room will be used on a regular basis. The kitchen has plenty of storage space with all you need in terms of mod cons. The two double bedrooms are both a good size, one overlooking the leafy road and Brockwell Park, whilst the other is tucked away to the rear of the property contemporary and full stocked bathroom makes the property perfect for anyone looking to rent out a bedroom or share with friends. The flat has generous windows and fairly ceilings which adds to the light and airy atmosphere in the property, whilst wooden flooring and a charming bay window create a characterful feel throughout. A real blank canvas, the apartment is ready for purchasers to move into hassle free and add their own touch over time.

Features

- Two double bedrooms
- Victorian Conversion
- Overlooking Brockwell Park
- Well-distributed internal living space
- Local amenities in minutes
- Large private garden
- A short walk to the amenities in Herne Hill and Tulse Hill
- Chain-free

Council tax band C EPC rating (null)



Norwood Road, Herne Hill, SE24



2 Bedroom Flat

Approx internal area:

617 sqft 57 sqm

While we do try our very best, floor plans are produced as a guide only and we take no responsibility for the precise accuracy with which any property is represented

Norwood Road



Ground Floor



Norwood Road, Herne Hill, SE24

